

# BELA

EDUCATION FOR YOU ENGLISH CENTER

Start where you are

Use what you have

Do what you can

CLARK CAMPUS

# WHY CLARK PHILIPPINES ?



## FEATURE 1 Asia's transportation hub

There are many flights at Clark International Airport. Cebu and Boracay, as well as major Asian countries such as Malaysia, Hong Kong, Macau, Thailand, Singapore, Korea. Based on convenient transportation, Clark is attracting tourists and retirees from all over the world and is attracting attention as a major city in Asia.



## FEATURE 2 Citizen's High English level

The Philippines is made up of many islands, and many Filipinos still use their local dialects but Clark is the place where the US military bases were located and so most of the citizens have used English, and where the level of English is still the highest in the Philippines.

## FEATURE 3 Little California

CLARK Philippines is nicknamed Little California. It is the city that was created to feel the most western atmosphere in the Philippines. It is the city where the most English native people live in the Philippines and has a lively infrastructure including shopping malls, hospitals, hotels, restaurants.



## FEATURE 4 Low cost + High quality education

The Philippines is an English-speaking country, comparing to the US and UK. Which has 1/3 of its cost China, Taiwan, Japan and Europe and the Middle East are looking for an English center to study.



## ABOUT BELA

**BELA**, is an English language institute that was established in 2006. Based on a thoroughly developed curriculum with internationally competent teachers, we offer systematic English education and English as a second language to students who want to improve their English language skills. We want to become a center of education for the 21st century global leaders. We provide a customized curriculum tailored for each student's level and needs for effective English language learning. We do our best to provide a family oriented atmosphere and learn not only English, but much more.

For the better future of our life

**BELA will be with you.**

## Best English Learning Academy

### ■ Location

It's 15minutes from Clark airport and below 2hour drive from Manila.

### ■ Vision

To be a leading language center with family oriented atmosphere for various nationalities that gives excellent education to enhance communication skills.

### ■ Mission

To provide quality education that transforms multinational learners into a compassionate, well educated and team player students with diversity and respect to others.

### ■ Goals

- Produce people who communicate well.
- Produce people with international competitiveness.
- Produce people who will be socially, emotionally, and

**B**ela is an academy where in the management and the teachers shapes the students holistically and develop them fully.

**E**nglish is the universal language. It means all over the world know English, so you have to learn it.

**L**earning English in BELA is the best decision you have ever made in your life because here, we can teach you technically, academically and grammatically precise.

**A**ll nations are welcome here, we will accept you with open arms and whole heartedly, we will treat you as our family and friends. You will have fun here at the same time learning English as the mail goal.



## ESL(English as a Second Language)

COURSE	PH(1:1)	PH(1:5)	NATIVE(1:1)	NATIVE(1:5)	TOTAL
ESL FLEXIBLE	3				3
ESL STANDARD	4			1	5
ESL INTENSIVE	4	3		1	8
ESL SPARTA	7			1	8

### ESL FLEXIBLE

This curriculum is suited for those who want to enhance their speaking skills that is useful on everyday set up. We focus on pronunciation, useful expressions and building the confidence in speaking to foreign people.

### ESL STANDARD

This curriculum is for those who want to improve their English skills focusing in grammar, speaking and listening. Teaching comprehensive details for those who want basic knowledge in English.

### ESL INTENSIVE

It is suited for students who want to focus on four basic subjects in English and needs to build the students confidence in a group class. We help our students gain more knowledge and supporting them to be open and enjoy the company of the other members of the group. Native group class is also included that helps improve their accent and pronunciation. 4 one-one class with Filipino Teacher that helps you improve and push you to study harder.

### ESL SPARTA

This curriculum is best given to students who really needs attention and just starting to learn the language. We target all areas like grammar, vocabulary, reading, speaking, writing and listening. These are vital for those who want to start having thorough study and improve their English. They also have native group class wherein it will target their pronunciation and accent. 7 one-one class with Filipino teachers that help them gain more information.

## TOEFL / IELTS

COURSE	PH(1:1)	PH(1:5)	NATIVE(1:1)	NATIVE(1:5)	TOTAL
TOEFL	4	3		1	8
IELTS	4	3		1	8

### TOEFL

TOEFL stands for Test of English as a Foreign language - is a standardized test for non-native speakers who wish to be enrolled in English-speaking (foreign) universities. It measures the English-language ability and somehow part of the requirement before you get admitted to academic/professional institutions. We help our students to aim for the highest score as possible as we target their weak areas. Enhancing their vocabulary knowledge, familiarizing themselves with test taking strategies and building their confidence in using English. Preparing our students fully is our objective in this course. We provide several practice tests and discuss to our students the result and give advice for their improvement .

### IELTS

IELTS is an acronym for International English Language Testing System. It targets Speaking, Writing, Reading and Listening with two kinds of test, General (used for immigration purposes) and Academic (used for continuing study and professional purposes). We aim to help our students gain lots of knowledge pertaining to 4 major core areas. We provide intensive teaching with lots of vocabulary words, familiarizing our students with test taking strategies, techniques on how to get highest score as possible. Practice test is given and discuss their answer and give advice for improvement.



## DETAIL SUBJECT

### Reading (Phonics, Speed Reading, Reading Comprehension)

We help our students read with correct pronunciation and diction, teach them how to comprehend and discuss unfamiliar vocabulary words that are helpful to expand their knowledge in English.

### Writing (Basic Sentence Construction, Daily Journal, Short Essays)

In this area we teach to our students the rules on how to make essay correctly and precisely. We provide correct details in writing Titles, punctuation rules, expanding the body of the paragraph and helping our students use various vocabulary words for better results. We also give our students essay homework everyday for them to practice and use their own ideas on a given topic. It will be checked and discussed by the teacher for them to develop their writing skills.

### Listening (Daily Conversation, Music and Movies, Audio Files)

We provide extensive practice for this area. We teach them proper way in getting minor details when listening to the file. We also encourage our students to take note on our tips and strategies for their improvement.

### Speaking (Daily conversation, Topical Dialogues/ Discussions, Speech)

We help them be comfortable in using the language by checking on their pronunciation, accent and sentence constructions are top priority in this area. The teacher facilitates but the students are the ones who do the talking as we assure our students that at the end of their course, they will be able to speak English much better and with confidence.

### Grammar

We help our students learn the rules and patterns of the verb tenses. We also teach them how to compare the confusing part in grammar. We also provide exercises to students to practice to enhance their skills. We then discuss their answer in which very helpful for their improvement.

### Vocabulary

We provide various words that are useful not only commonly used words in everyday life but vocabulary that are needed for deeper studies. We allow our students to memorize and be familiar with the pronunciation, spelling and most importantly the meaning of the words which can be useful.

## LEVEL SYSTEM

Leveling Leveling System	Description
<b>Starter</b>	The student has very limited vocabulary and has difficulty in expressing himself. He can know the abc but cannot construct simple sentences.
<b>Beginner</b>	The student has simple vocabulary and can comprehend WH-questions. He can use simple sentences correctly but has difficulty using compound and complex sentences.
<b>Pre - Intermediate</b>	The student can express his ideas and has good comprehension. In addition, he has an average range of vocabulary but uses them inappropriately and commits some grammatical errors and still get confused with the usage of the verb tenses.
<b>Intermediate</b>	The student can express organized ideas and is able to comprehend a wider range of topics with less difficulty. He has a wide range of lexical resources and can use them appropriately with very minimal errors.
<b>Advanced</b>	The student can be compared to a fluent English Native speaker.

## FAMILY CAMP COURSE

AIM : To study English with family from preschool to high school

Goals : To make it easy to learn English without the sense of resistance to English.

Class : In the ESL class, both parents and children choose one class and take classes.



## KINDERGARTEN COURSE

AIM : To study English with family from pre-kinder to kinder.

Goals : To experience English and interact with foreigner.

Class : Kindergarten in the morning. (8:00~11:30)

\*You can enroll additional class in the afternoon with additional pay.

(ex : 1:1 CLASS(Flexible), International school schooling, International school schooling+1:1 CLASS(Flexible))

### (COMMON COURSE)

TIME TABLE	
8:00~11:30	MUSIC GYM
	READING BOOKS
	ART
	COOKING
	FIELD TRIP
	MATH

### (KINDER ESL COURSE)

1:1 CLASS (Flexible)	
12:30~15:05 16:10~18:00	SPEAKING
	LISTENING
	READING (PHONICS)
	WRITING

### (SCHOOLING COURSE)

SCHOOLING	
12:30~15:30	READING
	MATH
	ART
	P.E
	LISTENING
	SPEAKING





# JUNIOR CAMP COURSE

AIM : To study English independently without family.

Goals : To makes it easy to learn English without the sense of resistance to English.

Class : ESL INTENSIVE COURSE or ESL SPARTA COURSE.

\*Include : Academy tuition fee, dormitory, guardian fee, night time snack

\*Exclude : Activity (every Saturday), Long distance Activity(2night 3day), Miscellaneous fee

\*4 bed room (Standard)

## ADVANTAGE

### 8 HOURS ENGLISH CLASS

8 Hours of English classes  
Using elaborative discussion

### SPEECH CONTEST

English through  
Speech contest Improves  
presentation skills.

### NIGHT CLASS

Improving English  
learning ability by  
memorizing sentence  
patterns and vocabularies.

### ASSESSMENT TEST

English evaluation  
every Friday.



### ESL INTENSIVE COURSE

Time	Monday to Friday
07 : 00 ~ 07 : 10	Wake up call & Washing
07 : 10 ~ 08 : 00	Breakfast & Prepare to class
08 : 00 ~ 11 : 30	1:1 Classes (4 classes)
11 : 30 ~ 12 : 25	Lunch
12 : 35 ~ 13 : 20	Break time (Basket ball, Swimming etc.)
13 : 30 ~ 16 : 05	Group Classes (Philippines 3 Classes)
16 : 15 ~ 17 : 00	Group Classes (Native 1 Classes)
17 : 10 ~ 18 : 00	Dinner
18 : 00 ~ 20 : 00	Night time classes (Vocab, Pattern)
20 : 00 ~ 20 : 30	Snack Time
20 : 30 ~ 21 : 30	Break time
21 : 30 ~ 22 : 00	Sleep

### ESL SPARTA COURSE

Time	Monday to Friday
07 : 00 ~ 07 : 10	Wake up call & Washing
07 : 10 ~ 08 : 00	Breakfast & Prepare to class
08 : 00 ~ 11 : 30	1:1 Classes (4 classes)
11 : 30 ~ 12 : 25	Lunch
12 : 35 ~ 13 : 20	Break time (Basket ball, Badminton)
13 : 30 ~ 16 : 05	1:1 Classes (3 Classes)
16 : 15 ~ 17 : 00	Group Classes (Native 1 Classes)
17 : 10 ~ 18 : 00	Dinner
18 : 00 ~ 20 : 00	Night time classes (Vocab, Pattern)
20 : 00 ~ 20 : 30	Snack Time
20 : 30 ~ 21 : 30	Night time classes (Sentence, Diary)
21 : 30 ~ 22 : 00	Sleep

### WEEKEND SCHEDULE

Time	Saturday	Sunday
07 : 00 ~ 07 : 10	Wake up call	Wake up call
07 : 10 ~ 08 : 00	Breakfast	Breakfast
08 : 00 ~ 11 : 30	Activity	Break Time
11 : 30 ~ 12 : 25	Lunch	Lunch
12 : 35 ~ 17 : 00	Activity	Classes (Vocab, Pattern, Sentence, Diary)
17 : 10 ~ 18 : 00	Dinner	Dinner
18 : 00 ~ 21 : 30	Break Time	Break Time
21 : 30 ~ 22 : 00	Sleep	sleep

## ADULT COURSE

AIM : To enhance their English skill and abilities.

Goals : To increase conversational skills in everyday life and increase English accredited certification scores.

Class : ESL, IELTS, TOEFL

\*2 ~ 4 bed room



## STUDY ABROAD

AIM : Study abroad

Goals : Entering Noblesse, Westfields, Brent International School, and Private School in the Philippines, to prepare for foreign universities and employment abroad.

Class : ESL FLEXIBLE( After school 3 hours 1:1 But before entering school following junior camp course and tuition fee

\*Inclusion : Academy tuition fee, dormitory, guardian fee, night time snack

\*3 beds room (Standard)

### Features of study abroad

- From studying habits to living and eating habits.
- Facilities and places for children's leisure activities inside the school.
- Pick-up service daily. (morning /afternoon)
- Guardian visits the school at least once a week.
- After-school classes. (1: 1 homeroom teacher)
- Steady consultation with counselor about learning, life, and career.
- Chinese tutor. (optional: extra depending on the student's ability extra pay)
- Vision management for the future of the child through a lot of communication with parents.





## INTERNATIONAL SCHOOL



### <Noblesse International School>

It is located 5 minutes by car from the school and has a wide range of facilities including a wide lawn, a basketball court, a swimming pool, and a golf course. Since the 11th grade, there are IB programs and many famous universities have been sent. The annual tuition fee is 17,000 dollars based on G6 (including uniform cost, teaching materials, supplies) All subjects, home-room teachers are native speakers. There are 10 to 12 students in one class per school year.



### <Westfield International School>

It is a one-minute drive from the school and has a wide range of facilities including a wide lawn, a basketball court, and a convenience store. Students can live with a variety of native speakers, including Americans, Chinese and Canadians. There are about 40 students in one grade and about 20 students in one class. Of all the teachers, there are four native speakers. Based on G6, the annual tuition fee is 3,500 dollars. (including the cost of uniforms and supplies)



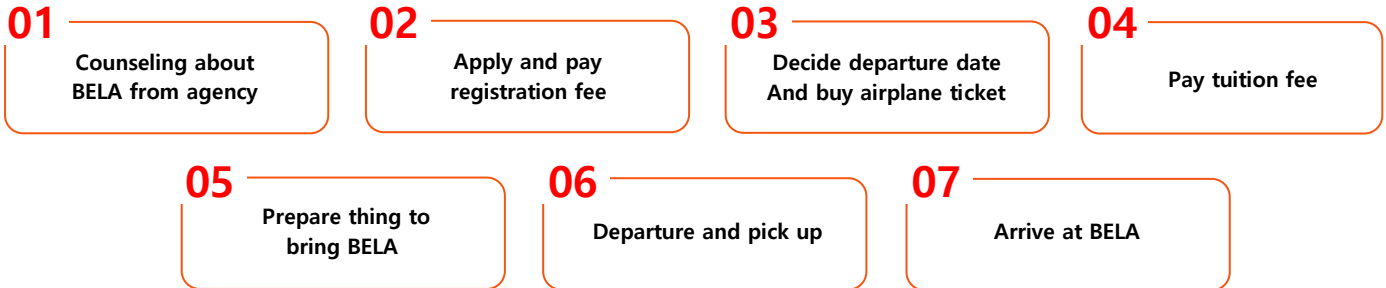
## INTERNATIONAL SCHOOL SCHOOLING CLASS

- WESTFIELDS INTERNATIONAL SCHOOL start schooling after the level test.  
(You can find out your international school level)
- Select all dates except for school holidays and no vacancy seats.  
(December 22 to 2018, January 2, 2019, June ,July)
- WESTFIELDS INTERNATIONAL SCHOOL It is possible for drop / pick-up from the academy to the school.  
(Shorter distance and safer when unloading)
- Free lunch is available at the school for a warm meal during lunch.  
(Individual lunch box is kept on a thermal insulation box)
- We will make reservations at the school for the desired period of time.
- All inquiries regarding the school such as level test, schedules, uniform, school counseling, etc will be provided by BELA academy. (only for campers)
- Students will be evaluated during the program can not be issued as a certificate and is not accepted as a schooling in own country / foreign schools.
- Tests are in progress during the hearing program and exam scores are not recognized anywhere.
- Please pay tuition fee (separate by grade), cost of school uniform, school supplies, etc.  
(individual inquiry fee)
- International school level test fee of 1500 pesos must be paid directly to school.
- BELA academy can introduce International school to the student with additional 1,000peso.
- BELA academy can help to enroll with International school with additional 4,000peso.
- School pick drop service is 3000peso to pay BELA academy.
- Family camp students are allowed to apply for a minimum of 3 hours of schooling but only 2 hours of 1: 1(Filipino) classes available. (The remaining one hour fee is non-refundable.)
- If the family camp student needs guardian service, they pay 1,000peso to BELA academy per schedule.  
(It is free when parents visit.)





## ENROLMENT PROCEDURE



## TUTION FEE

### ■ Registration Fee

**\$150 (Non – Refundable / One time payment)**

PROGRAM	1week	2weeks	3weeks	4weeks
ELS FLEXIBLE	\$175	\$300	\$400	\$500
ELS STANDARD	\$230	\$390	\$520	\$650
ELS INTENSIVE	\$265	\$450	\$600	\$750
ELS PARTA	\$300	\$510	\$680	\$850
KINDERGARTEN	\$105	\$180	\$240	\$300
IELTS	\$300	\$510	\$680	\$850
TOEFL	\$300	\$510	\$680	\$850
JUNIOR CAMP (intensive)	\$595	\$1,020	\$1,360	\$1,700
JUNIOR CAMP (sparta)	\$630	\$1,080	\$1,440	\$1,800
STUDY ABROAD				\$1,800
ACTIVITY	\$50	\$100	\$150	\$200

DORMITORY TYPE	1week	2weeks	3weeks	4weeks
1 BED	\$335	\$570	\$760	\$950
2 BED	\$245	\$420	\$560	\$700
3 BED	\$340	\$390	\$520	\$650
4 BED	\$320	\$375	\$500	\$620

### ■ Miscellaneous Fee

Title	Price(PHP)		
VISA	8weeks – 3,500 12weeks – 4,800 16weeks – 3,130 20weeks – 3130 24weeks – 3130		
SSP	PHP 6,500		
ACR I-CARD	PHP 3,500		
ID CARD	PHP 500		
DEPOSIT	PHP 3,000		
BOOKS	PHP 250 TO 700 (EACH BOOK)		
ELECTRICITY	PHP 2,000 (1 PERSON)		
	PHP 1,600 (2 PEOPLE)		
	PHP 1,300 (3 PEOPLE)		
	PHP 1,100 (4 PEOPLE)		
UTILITY	PHP 3,000(1 PERSON)		
	PHP 2,300 (2 PEOPLE)		
	PHP 2,000 (3 PEOPLE)		
	PHP 1,800 (4 PEOPLE)		
Airport Pick UP	Clark	PHP 500	PHP 500(Group)
	Manila	PHP 5,000	PHP 3,000(Group)
Airport Drop Off	Clark	PHP 500	PHP 500(Group)
	Manila	PHP 5,000	PHP 3,000(Group)

- Junior students cannot enroll to the academy without a guardian like an adult student, but junior camp students can enroll to the academy without a guardian.
- Junior camp students have to choose activity.
- Schooling fee depends on level or grade. If you want schooling program, first you must check the availability of vacancy seat in school.
- Miscellaneous fee is not included to all programs we offer.

- Below 24 Months old Free dormitory fee. (exclude miscellaneous fee)
- In case of studying abroad, you have to pay 3 months tuition fee.
- In case of pick and drop, group is above 2 people.



## ACADEMY RULES

- I and my parents will be responsible for any and all losses incurred during the class from the program start date to the end date.
- If you do not attend the class after 10 minutes, the class will be abolished.
- There are three or more failures when the class does not comply with truancy, cheating at the examination, vandalism, personal behavior in outdoor activities, ignoring native English teachers, moving to a dormitory without permission, you will be terminated.
- As a minor student, I do not smoke or drink alcohol. I will be terminated once caught.
- Do not buy dangerous toys, and you and your parents will be responsible for any accidents or problems that arise.
- Do not drive all kinds of motor vehicles or motorcycles. If the accident happens, you and your parents will take all responsibility
- Students will be discharged if they feel that there is a problem with the school, such as fighting between students, unauthorized entry and exit, resentment, bullying, and unauthorized leaving.
- You acknowledge that you are under the control of the laws of the Philippines and you and your parents assume all liability for any consequences of the violation.
- If you lose something due to your negligence (if you do not leave it to the supervising teacher), you are solely responsible for it, and we are not responsible for it.
- The assignments given by the teacher must be done.
- Accommodation is prohibited in a room other than your own (except if reported to the office for special reasons)
- Do not use your mother language during class time.
- If for any reason you lose or damage the school's goods, you pay the value of the goods.
- At all time, take the meal to the room and do not eat it.
- Individual outings during the training period are prohibited in principle.
- The student will be responsible for any fees incurred when sending money overseas.
- You can not postpone or change your class for personal reasons after arrival.
- If the student has a mental or physical problem, you must inform the school in advance
- If students sick during studying here, they can extend their duration if they have medical certification from doctor.
- In the event that natural disasters, natural disasters, unexpected delays and cancellations due to unforeseeable events, or services due to force majeure such as above are not provided, the school or its agent will not be liable for damages or any legal liability.
- In the Philippines, sudden holidays may occur, and we follow Philippine holidays.
- We will notify parents in advance about all issues that arise in the school, and will not create criminal or civil legal problems in Korea or in the Philippines for issues that have arisen as a result of moving school or returning to school.
- The Institute does not take any responsibility for loss of life, damage, damage, etc.
- All accidents, losses and diseases (endemic diseases) that occur inside the school and other outside areas (when going out and traveling) can only be guaranteed within the limits of the student insurance and traveler's insurance coverage, which is compulsory when enrolling students.
- The school reserves the right to change prices in the event that there is a government law clause such as exchange rate and tax increase or a reason that can not be controlled by the institute. I have the authority to change.
- We are not responsible for any incidents, accidents or illnesses caused by age, medical conditions or allergies. If you are suffering from chronic diseases or allergies, you should get a doctor's diagnosis in advance and follow your doctor's judgment. Also, you should inform the institute about your doctor's diagnosis of chronic illness and allergy. If you find it difficult to accept, you may be denied on the admission.
- I understand that the costs incurred locally are received locally and I agree to pay the costs locally.

## REFUNDABLE POLICY

1. If you cancel your training before the start of training, you will receive a full refund of tuition fees (no refund of registration fees)
2. If you request a refund within 1 week after starting the training, you will receive 50% without 4weeks tuition fee
3. When a refund is requested after 1 week after the start of the class, 50% of the tuition fee is refunded except for the starting 4 weeks
4. When forced discharge due to violation of regulations, the tuition fee is not refundable.
5. Due to health problems, you can defer class expense for the remaining period, and if you want to refund the tuition fee, you will be refunded 50% of the class expense excluding starting 4 weeks and the next 4 weeks. (Possible at the time of submission of doctor's opinion)
6. If family members accidentally dies, you can defer class expense for the remaining period, and if you want to refund the tuition fee, you will be refunded 50% of the class expense excluding starting 4 weeks and the next 4 weeks. (It is possible to submit a death certificate)
7. All tuition fees must be paid four weeks before the start.

**\*PROCESSING OF REFUND MAY TAKE ABOUT A MONTH**

**\*REFUND WILL BE SUBMITTED THROUGH YOUR REGISTRATION OFFICE**



## TESTIMONIES

### EASTEHR / Female / Korean

#### - BELA life -

When I first came to BELA, I was mentally frustrated. It was true that I was worried about me from other homestays. I still got a lot of help from teachers, sisters and sisters, and I was able to get into my senior year. It is not a day or two to worry about crying a lot when I am in 11th grade. At that time, I had a lot of counseling with my teachers and I started working like a new dream. I tried hard not to support anyone in my study. I did not study all day, but I did not have much stress with my friends who made friends with me because I made an environment where I could chat all night, talk about my troubles, and free my hobbies. I always really appreciate that part. I honestly left my parents and friends so I was lonely and hard on my living in the Philippines. Nevertheless, I was able to spend a fun day in BELA. As I live in BELA, already almost 3 years, I am grateful that I have traveled a lot of places, if I stay in Korea maybe I never have experienced it. I have many peculiar and angry personality, but I change my personality to be better than before when I live in Korea. When I left Bella, I thought it was lucky to be able to go out with a lot of precious memories rather than hard and bad memories. I think it is a virtue that helped me comfort and help me around. President Arthur and Vice president Missha are my second parents.

#### -High school life in Philippines and graduation of academic scholarship-

I think school life was fun. Honestly, it would be a lie if you told me it was not hard. The school I attended was Our Lady of Mt. Carmel Montessori in Baguio, Catholic school is very strict. Since most of the local students who entered there have entered Senior High with excellent grades, I did not think about the top grades at first and just make effort to follow the class. To do this, I studied a lot of Tagalog, the biggest disadvantage of foreigners. Thanks to it, I was able to do the conversation and I was able to keep up with the class without any inconvenience. If I had a lot of friends, I could study more quickly. (Filipino people kindly help me, too). In the 11th grade, I changed my major and I was busy trying to get help from classmates. However, since I was in the 12th grade, I was able to take care of my grades. I raised my grades until I was able to raise my grades, so I was able to raise my grades to 7th place in the last semester of the 12th grade. I was able to get a Honor Award for each semester and I was able to get it every month in front of other students when I graduated.

### DAISY / Female / Korean

I am currently a student at the University of the East in Manila taking up a course in dentistry. I started studying at BELA Language School for the first time when I was in elementary school. At first, the plan was to finish only elementary school here, and from middle school I will study in Korea. However, unlike the Korean schools, the Philippine schools allowed all the students to participate in class through participative education rather than the injective education. I was an introvert and changed my orientation and became more of an extrovert, and the stress on studying was reduced a great deal.

I have also been studying Chinese for 4 years since I was in my 6th grade and I thought that I should finish university in the Philippines. At the age of 17, I entered University of Baguio's dental school. And at the time that I was going to finish my pre-dentistry schooling, the director recommended that I transfer to the most famous University of the East in Manila. I am still looking forward to travelling to Bela on a bus to Baguio without any hesitation when I have vacation, holiday, or worries. So far, I am grateful to BELA for helping me to do well. I will be a good doctor and I will repay you for your grace.





# SCHOOL FACILITY

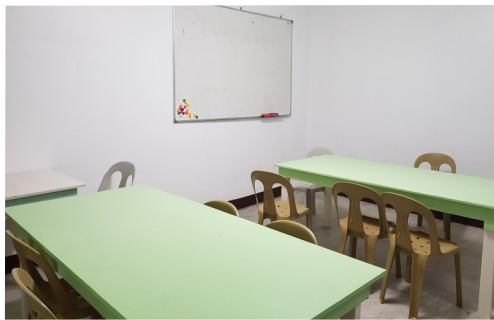
1:1 CLASS ROOM



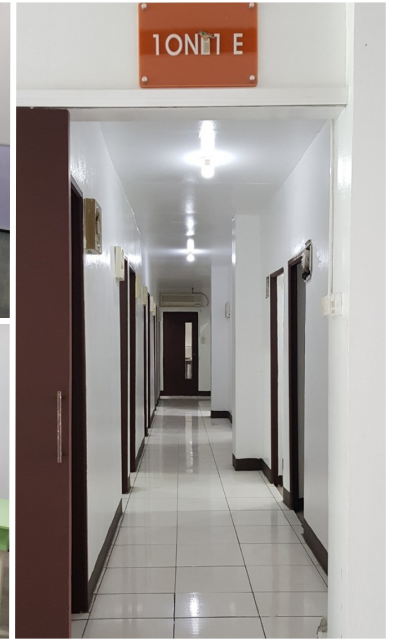
GROUP CLASS ROOM



SELFSTUDY ROOM



TOILET



OFFICE



KINDERGARTEN



3 BED ROOM



4 BED ROOM



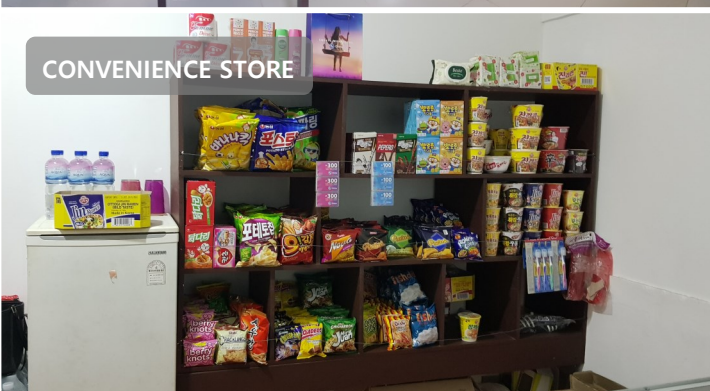
DINNING ROOM



PANTRY



CONVENIENCE STORE



PLAYROOM



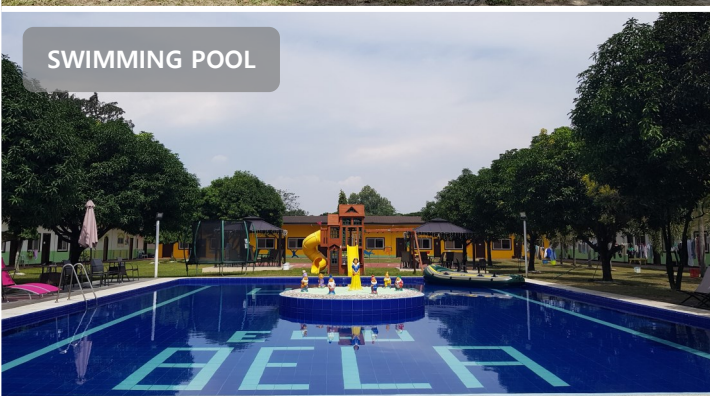
PLAYGROUND



BASKETBALL COURT



SWIMMING POOL



GAZEBO





**ADDRESS : Block 23 Lot 1 to 14 Sunset valley Cutcut, Angeles City, Pampanga**

**TEL : +63-927-652-2341, 070-7895-5132, 010-7143-8716**

**E – mail : belacademy2006@gmail.com**

**LINE ID : belacademy, eunhee0279**

**WECHAT : belacademy2006**

**KAKAO TALK : taesik1210**